

ASSESSOR'S MAP 74 Map No.2 of Salt Marsh and Tide Lands (Case 10r.6-25) Code Area Nos. 21-000

Sale Map No.10 of Salt Marsh and Tide Lands (BK.17-Pg.30)

Plat of the Encinal San Antonio (BK. A deada-Pg.152)

Map of the Lands of the Teutonia Park and Homestead Association (BK.5-Pg.5)

Map of Damon's West End Tract (BK.2-Pg.18)

1305

Scale: 1" = 200'

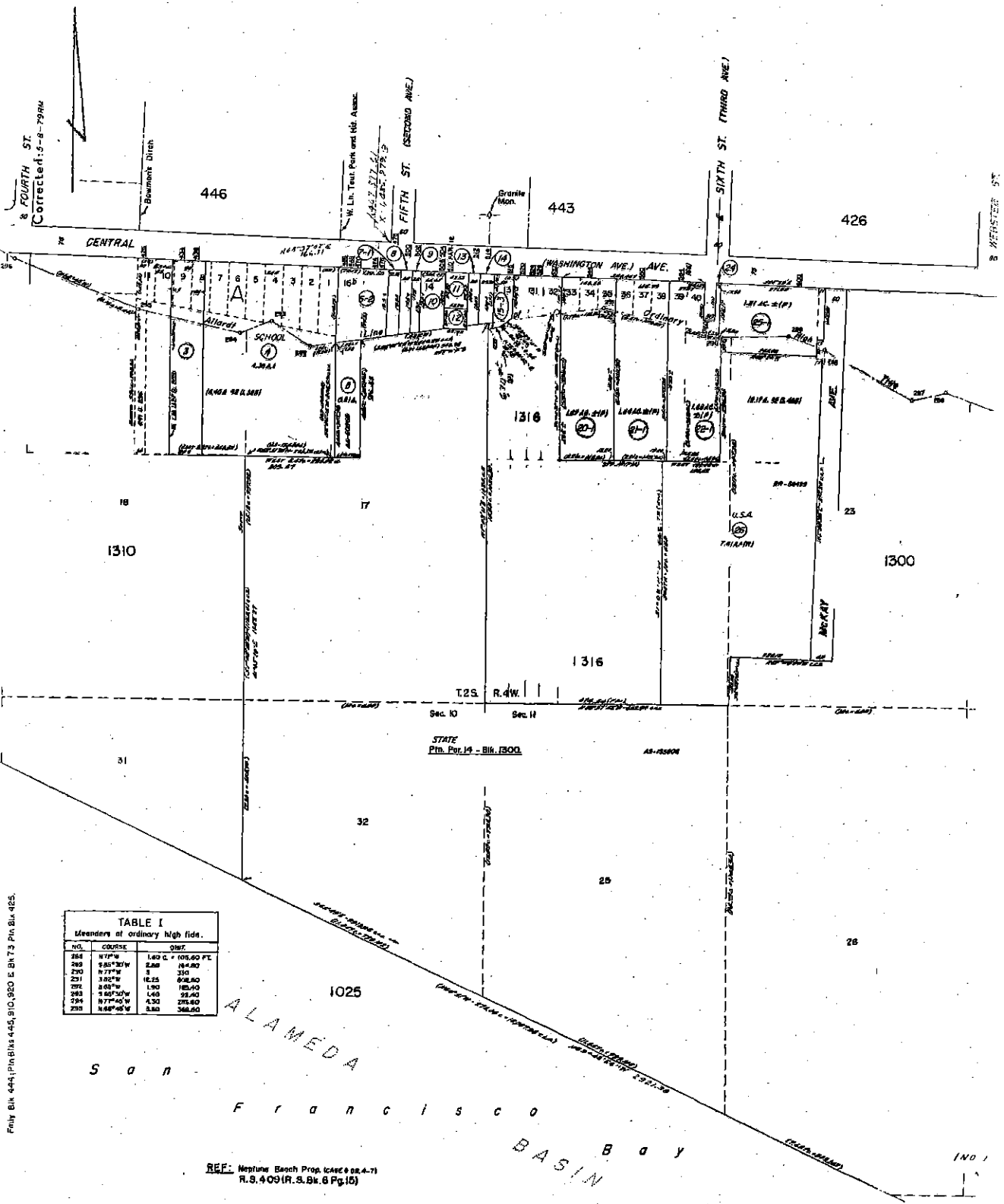


TABLE I
Meanders of ordinary high tide.

NO.	COURSE	DIST.
288	N77°W	1.60 L. 105.00 FT.
289	S80°30'W	2.80 18.00
290	N77°W	5 35.00
291	S80°W	16.25 98.00
292	S80°W	1.90 125.00
293	S80°30'W	1.40 92.00
294	N77°45'W	4.30 275.00
295	N68°45'W	3.80 242.00

Folio Bk. 444; Pgs Bks 445, 910, 920 E. Bk. 73 Pgs Bks 465.

SEE: Neptune Beach Prop. (Case 9 08.4-7)
R.S. 4 091R. S. Bk. 8 Pg. 15