

ASSESSOR'S MAP 74

Map No.2 of Salt Marsh and Tide Lands (Case 1 Dr.6-26) Code Area Nos. 21-000 21-004

Sale Map No.10 of Salt Marsh and Tide Lands (Bk.17-Pg.30)

Plat of the Encinal San Antonio (Bk. A deeds-Pg.152)

Map of the Lands of the Teutonia Park and Homestead Association (Bk.5-Pg.5)

Map of Damon's West End Tract (Bk.2-Pg.18)

1305

Scale: 1" = 200'

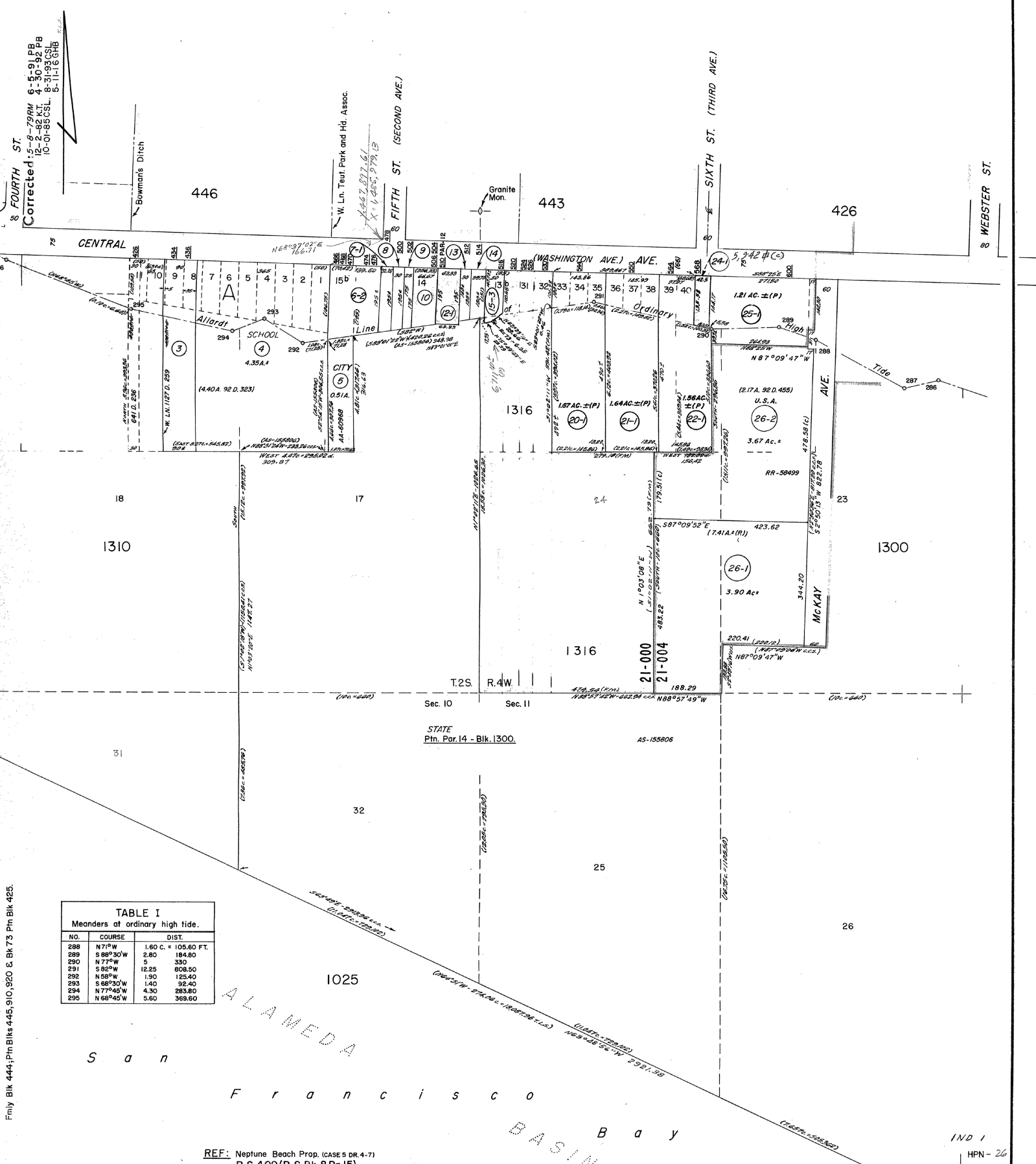


TABLE I
Meanders of ordinary high tide.

NO.	COURSE	DIST.
288	N 71° 0' W	1.60 C. = 105.60 FT.
289	S 88° 30' W	2.80 184.80
290	N 77° 0' W	5 330
291	S 82° 0' W	12.25 808.50
292	N 88° 0' W	1.90 125.40
293	S 68° 30' W	1.40 92.40
294	N 77° 45' W	4.30 283.80
295	N 68° 45' W	5.60 369.60

Fmly Bk. 444, Ptn Bks 445, 910, 920 & Bk 73 Ptn Bk 425.

ALAMEDA

S a n

F r a n c i s c o

B A S I N B a y

REF: Neptune Beach Prop. (CASE 5 DR. 4-7)
R.S. 409 (R.S. Bk. 8 Pg. 15)

IND 1
HPN - 26